

NOTE.
 WATER SUPPLY RESERVOIR FILLED BY
 ABUTMENT STATIONS. CAPACITY 1,500,000 GALLONS.
 ELEVATION ABOVE MEAN LEVEL OF TIDE 500
 FEET. MAIN 18" DIA. 10' DIA. DISTRIBUTING
 MAINS 12" DIA. 8" DIA. MAINS 6" DIA.
 SEVEN LARGE CISTERNS, CONNECTED WITH
 MAINS (SEE MAP) 11' DIA. 10' DIA.
 HEIGHTS ARE MEASURED ABOVE THE
 REGION OF MAIN.
 FIRE DEPARTMENT & APPROPRIATE VOLUNTEER
 FIRE DEPT. ONE STEAM & ONE HAND ENG.
 TRUCK. 1894 GOOD RUBBER & LEATHERS
 THE FIRE TRUCK CO. HAS AN ORGANIZED
 FIRE DEPT. OF 250 MEN. A POWERFUL
 FORCE. PUMP & SUFFICIENT HOSE TO
 REACH & AFFORD SOME PROTECTION TO
 THE WEST PART OF TOWN. BELOW LONGER ONE WAY 60'

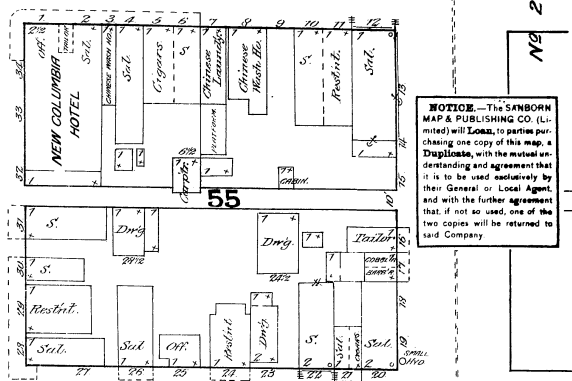
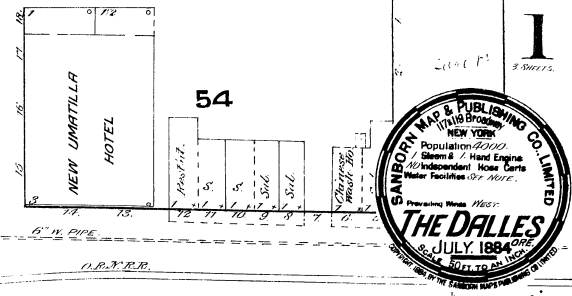


MAIN

KEY

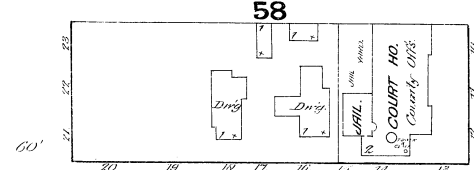
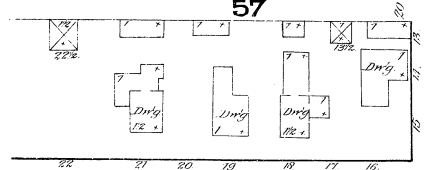
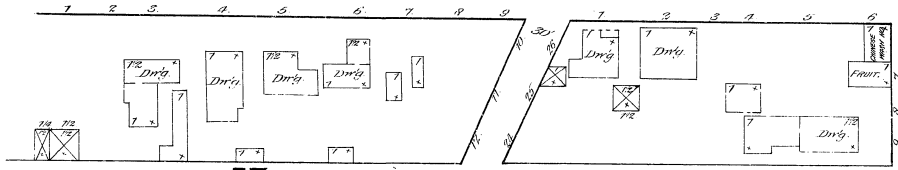
—	FIRE WALL 8 IN. AS ROOF
—	— 12 " —
—	— 18 " —
—	— 24 " —
—	— 30 " —
—	— 36 " —
—	— 42 " —
—	— 48 " —
—	— 54 " —
—	— 60 " —
—	— 66 " —
—	— 72 " —
—	— 78 " —
—	— 84 " —
—	— 90 " —
—	— 96 " —
—	— 102 " —
—	— 108 " —
—	— 114 " —
—	— 120 " —
—	— 126 " —
—	— 132 " —
—	— 138 " —
—	— 144 " —
—	— 150 " —
—	— 156 " —
—	— 162 " —
—	— 168 " —
—	— 174 " —
—	— 180 " —
—	— 186 " —
—	— 192 " —
—	— 198 " —
—	— 204 " —
—	— 210 " —
—	— 216 " —
—	— 222 " —
—	— 228 " —
—	— 234 " —
—	— 240 " —
—	— 246 " —
—	— 252 " —
—	— 258 " —
—	— 264 " —
—	— 270 " —
—	— 276 " —
—	— 282 " —
—	— 288 " —
—	— 294 " —
—	— 300 " —
—	— 306 " —
—	— 312 " —
—	— 318 " —
—	— 324 " —
—	— 330 " —
—	— 336 " —
—	— 342 " —
—	— 348 " —
—	— 354 " —
—	— 360 " —
—	— 366 " —
—	— 372 " —
—	— 378 " —
—	— 384 " —
—	— 390 " —
—	— 396 " —
—	— 402 " —
—	— 408 " —
—	— 414 " —
—	— 420 " —
—	— 426 " —
—	— 432 " —
—	— 438 " —
—	— 444 " —
—	— 450 " —
—	— 456 " —
—	— 462 " —
—	— 468 " —
—	— 474 " —
—	— 480 " —
—	— 486 " —
—	— 492 " —
—	— 498 " —
—	— 504 " —
—	— 510 " —
—	— 516 " —
—	— 522 " —
—	— 528 " —
—	— 534 " —
—	— 540 " —
—	— 546 " —
—	— 552 " —
—	— 558 " —
—	— 564 " —
—	— 570 " —
—	— 576 " —
—	— 582 " —
—	— 588 " —
—	— 594 " —
—	— 600 " —

The Dalles, Ore., July, 25th 1892
 I have carefully examined the Insurance Maps of
 The Dalles, Ore., made by The Sanborn Map & Publishing Co. (Limited)
 of New York. It covers substantially the business portion of
 the town, and I believe it to be reliable and correct.
Schuck & Paw

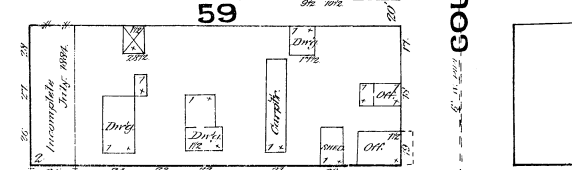
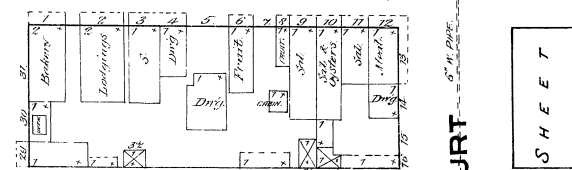


NOTICE.—The SANBORN
 MAP & PUBLISHING CO. (L-
 imited) will **LOOK** to parties per-
 chasing one copy of this map, a
Duplicate, with the usual un-
 derstanding and agreement that
 it is to be used exclusively by
 their General or Local Agent,
 and with the further agreement
 that if not so used, one of the
 two copies will be returned to
 said Company.

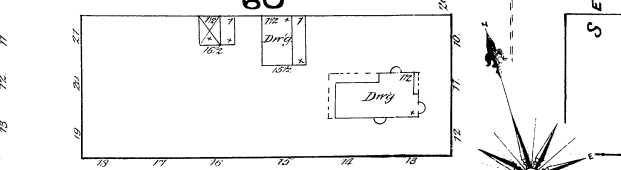
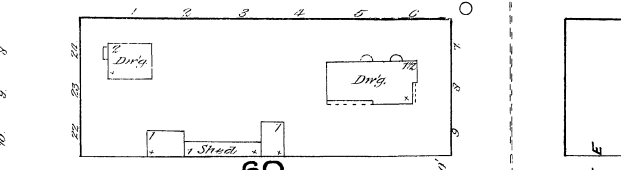
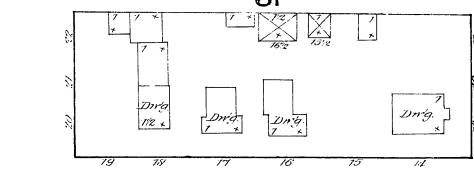
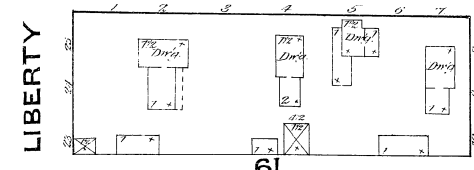
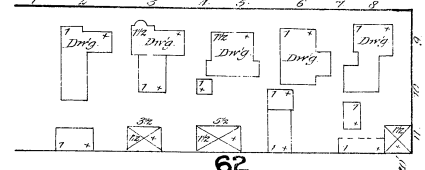
SECOND



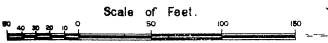
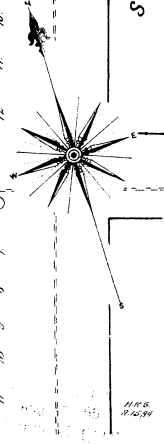
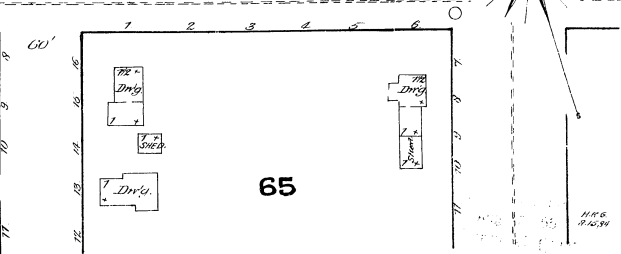
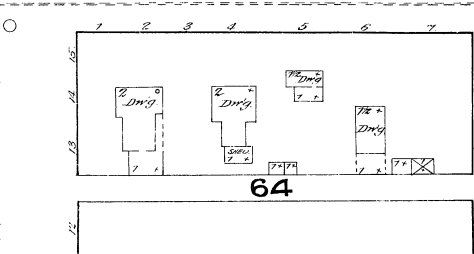
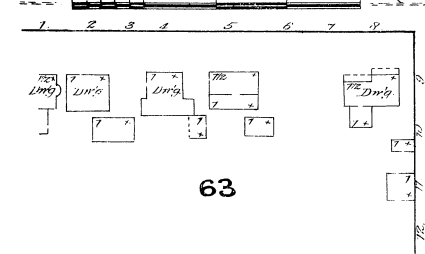
UNION



THIRD



FOURTH



SHEET

SHEET