

Nov. 1900
THE DALLES
ORE.

VEGETABLE GARDEN

Mill Creek

RETAILING HALL

251

7TH

248

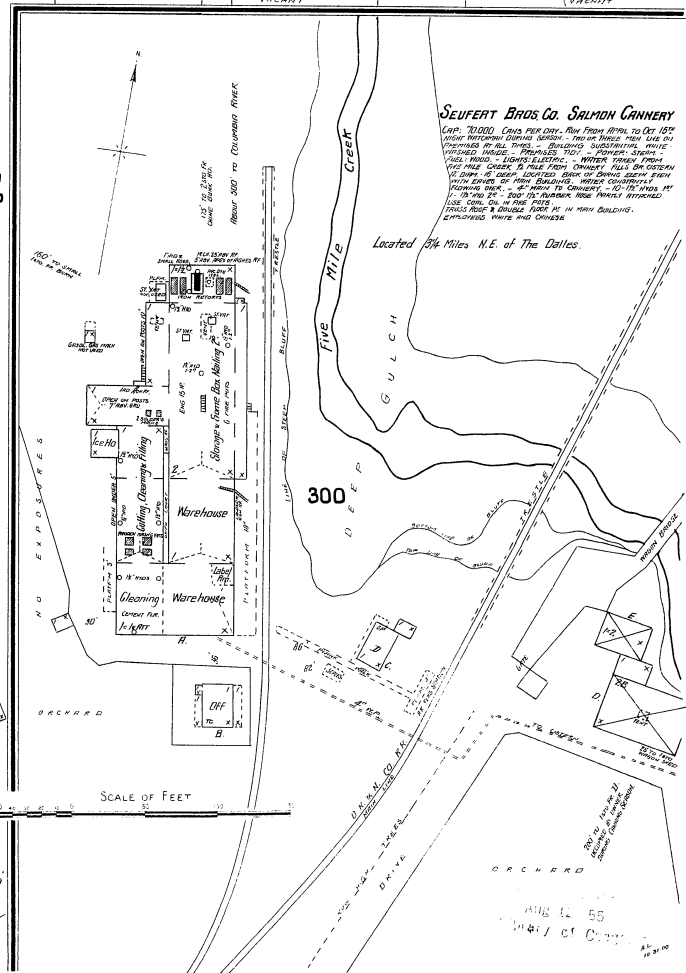
SEUFERT BROS. CO. SALMON CANNERY
CAP. 70,000 CANS PER DAY. RUN FROM APRIL TO OCT 15TH
LOCATED BETWEEN COLUMBIA RIVER AND FIVE MILE CREEK
PERMITTED BY ALL TOWNS - BUILDINGS SUBSTANTIAL, WATER
PROOF FLOORS - REFRIGERATORS - STOVES - SINKS -
PULL PULLEY - LIGHTS ELECTRIC - WATER TOWER FROM
FIVE MILE CREEK TO MILL FROM OWNERS' PUMP ON COLUMBIA
RIVER - 100' HIGH - LOCATED NEAR OF DRAINAGE FROM
COLUMBIA RIVER TO FIVE MILE CREEK, UNDER COLUMBIA RIVER
AT 10' AND 20' - SHOW THE PLUMBING WORK DETACHED
FROM MAIN ON IN THE FIVE MILE CREEK
TRAFFIC SHOW'S DOUBLE FLOOR AT IN MAIN BUILDING.
COMPLETED WORK AND CONCRETE.

Located 2 1/2 Miles N.E. of The Dalles

300

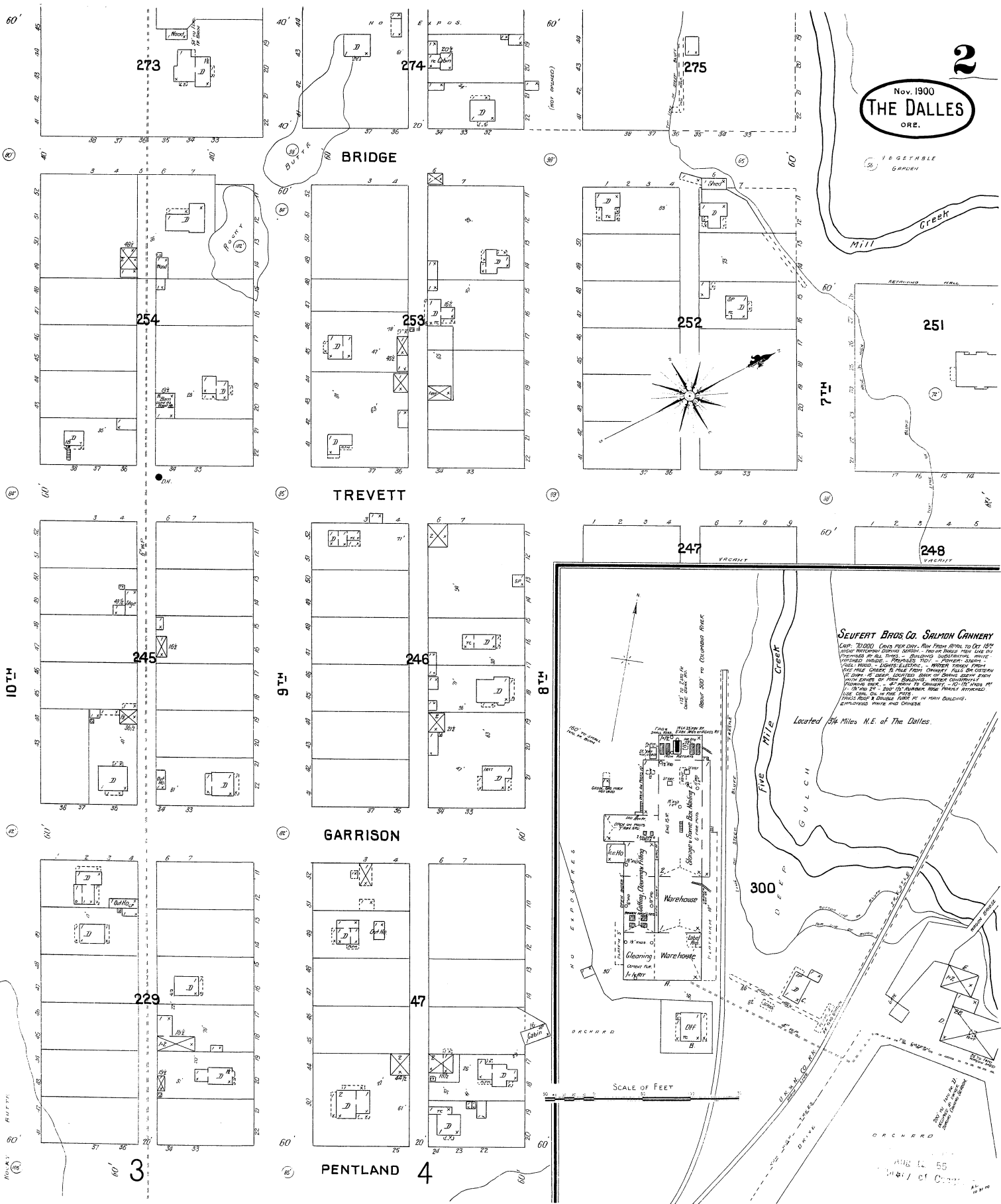
FIVE MILE CREEK

GULCH



SCALE OF FEET

NOV 12 1900
141 of C...



273

274

275

BRIDGE

254

253

252

TREVETT

245

246

247

248

GARRISON

229

47

PENTLAND

4

3

10TH

9TH

8TH

60'

40'

60'

60'

60'

60'

60'

60'

60'